

3 One Leader SYSTEMS

Choose from one of Leviton's
three connectivity systems:



*Power Sum Cabling System—
the perfect balance of technology
and value.*

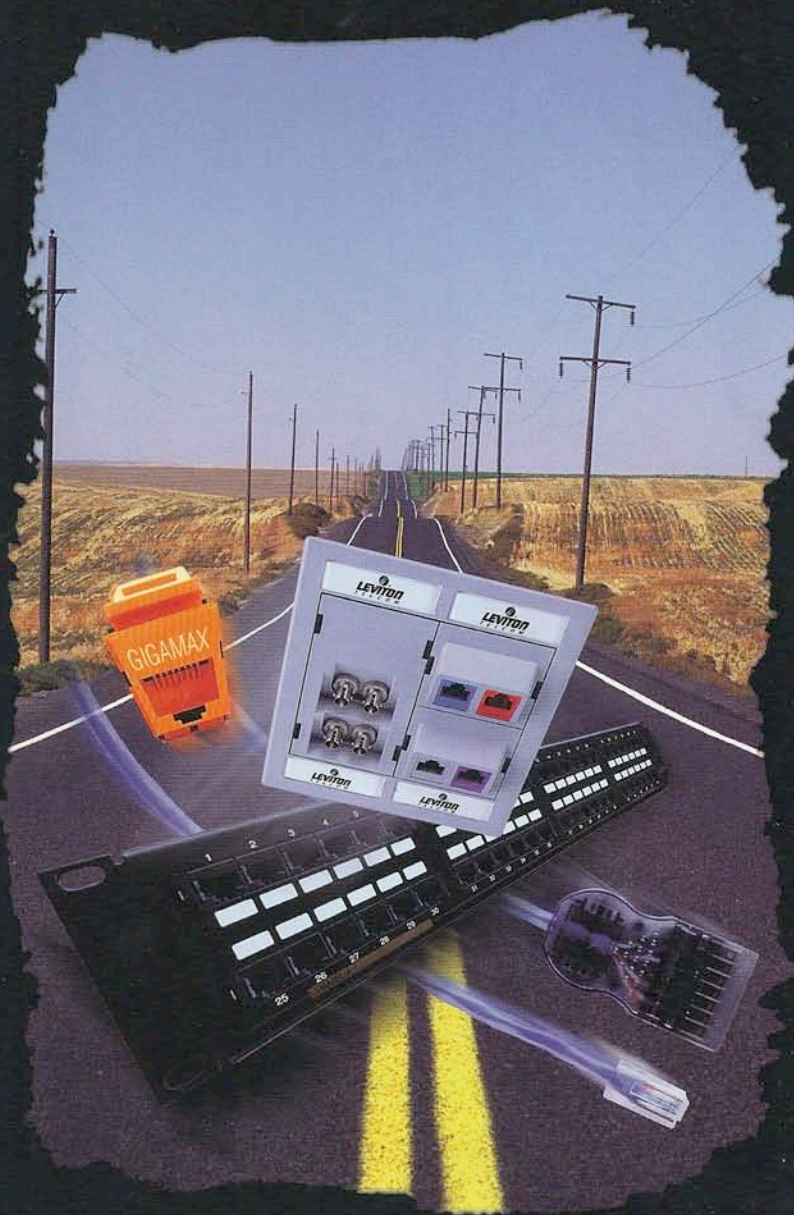


*GigaMax Cabling System—
the highest performance achievable
in a category compliant system.*



*eXtreme Cabling System—
the state-of-the-art for the most
advanced applications.*

You decide how fast you need to move.




LEVITON
TELECOM



What other company has a choice of cabling systems that are tailored to balance your network requirements, facilities planning and restraints on capital investment?

Leviton Telcom offers you three performance systems combining performance, value and a rock solid reputation for quality.

The Category 5 Power Sum, GigaMax™ and eXtreme™ cabling systems are all developed around our innovative family of QuickPort and QuickPort MOS connectors, workstation outlets and patching products.

- Lifetime Link and Channel Warranties.
- High performance cable choices from proven suppliers.
- Unparalleled design, installation and customer service.

All backed by one of the leaders in the industry.



POWER SUM CABLING SYSTEM

An exceptional value and the preferred choice for cabling systems expected to perform beyond minimum specifications, the Power Sum system delivers peak performance without a premium. When combined with Power Sum rated Category 5 cable, this system yields Power Sum Near-End Crosstalk (NEXT) and Power Sum Attenuation-to-Crosstalk Ratio (ACR) to support multi-pair transmission in shared sheath applications. The Power Sum System preserves transmitted signal energy above 100Mhz—a prime concern when considering 155 Mbps ATM applications. With Enhanced Category 5 cable, this system will exceed Category 5 ACR specification by 10dB. Choose this system to eliminate marginal performance, reduce Bit Error Rate (BER) and increase throughput of Category 5 Systems.

Applications: 155 Mbps ATM, 100Base-Tx, 10Base-T, WideBand and any applications specified for use on today's Category 5 rated channels.

CATEGORY 5 POWER SUM TEST DATA

Power Sum Channel	@ 100 Mhz (dB)
PS NEXT	29.5
Pair-to-Pair NEXT	31.9
Attenuation	21.5
PS ACR	11.8
Pair-to-Pair ACR	14.6

CATEGORY 5 POWER SUM CABLING SYSTEM COMPONENTS

QuickPort® Cat 5 PS Connectors	Part Number
8-conductor, non-keyed	41108-R*5
Category 5 Power Sum Patch Cords	
xx: 03, 05, 07, 10, 15 foot - blue cord	52454-xxL
Category 5 Power Sum Patch Panels	
xx: 12, 16, 24, 32, 48, 64, 96 port	T568B 59484-Bxx T568A 59485-Axx
Category 5 Power Sum Patch Blocks	
12-port (loaded)	T568B 59484-B89 T568A 59485-A89
(includes mounting bracket)	

*=Color choices for all connectors:

(I) ivory, (W) white, (G) grey, (E) black, (O) orange, (L) blue, (C) crimson red, (Y) yellow, (V) green, (P) purple, (A) almond, (B) brown, (R) dark red.



One Leader. Three Systems.



GIGAMAX™ CABLING SYSTEM

With new applications constantly under development, you cannot afford to guess what will become the preferred and ubiquitous standard. If you anticipate using 100Base-T and potentially 1000Base-T, you owe it to yourself to look at the GigaMax Cabling System. GigaMax provides extended bandwidth and supports newly established performance parameters including Return Loss and Equal Level Far End Cross Talk (ELFEXT), both identified by IEEE as essential to ensure Bit Error Rate (BER) expectations for 1000Base-T. This system exceeds all performance requirements proposed under SP 4195 for Category 5e requirements, established for 1000Base-T, to ensure future compliance to the adopted standard as well as developments in transceiver technology.

Applications: 1000Base-T, 155 Mbps ATM, 100Base-Tx, 10Base-T, and applications under development for Category 5e rated UTP channels.

GIGAMAX™ TEST DATA

GigaMax Channel	@ 100 Mhz (dB)
PS NEXT	32.1
Pair-to-Pair NEXT	38.6
Attenuation	20.5
PS ACR	13.9
Pair-to-Pair ACR	17.4
Return Loss	19.5
ELFEXT	24.7
PS ELFEXT	22.4

GIGAMAX™ CABLING SYSTEM COMPONENTS

QuickPort® GigaMax Connectors		Part Number
8-conductor, non-keyed		5G108-R*5
GigaMax Patch Cords		
xx: 03, 05, 07, 10, 15 foot - yellow cord		5G454-xxY
Y: (L) blue, (Y) yellow, (W) white, (E) black, (S) silver - boot color		
GigaMax Patch Panels		
xx: 12, 16, 24, 32, 48, 64, 96 port	T568B	5G484-Bxx
	T568A	5G485-Axx
GigaMax Patch Blocks		
12-port (loaded) (includes mounting bracket)	T568B	5G484-B89
	T568A	5G485-A89

EXTREME™ CABLING SYSTEM

For users who demand the highest level of performance available today for future multi-gigabit solutions, consider the eXtreme Cabling System. eXtreme provides usable bandwidth beyond 250 Mhz to ensure future compliance to adopted standards, and exceeds all proposed Category 6 and E Channel performance requirements under consideration by the EIA/TIA UTP Systems Task Group and proposed for the ISO 11801 E Channel.

Applications: 1000Base-T, 1.2 Gbps ATM, 622 Mbps ATM, 155 Mbps ATM, 100Base-Tx, 10Base-T and future applications under development for Category 6 rated UTP channels.

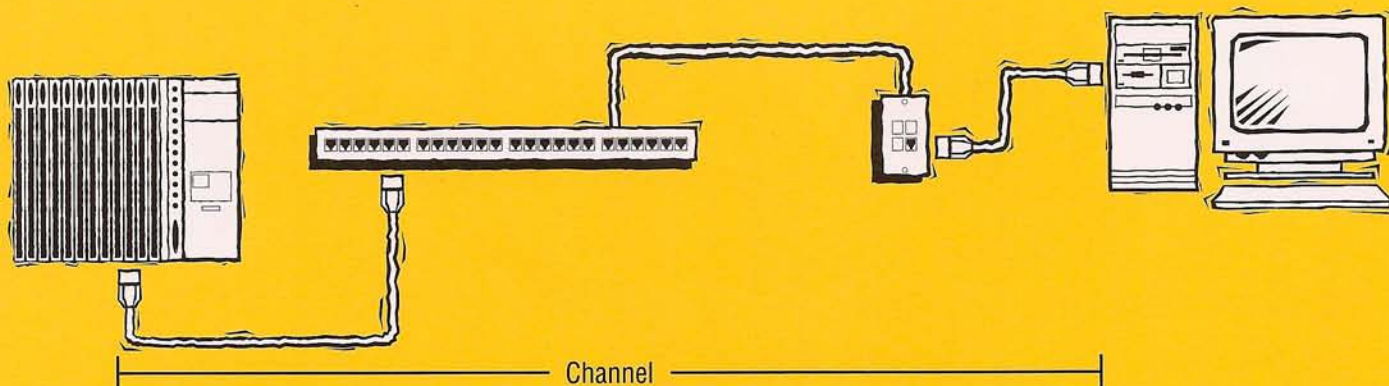
EXTREME™ TEST DATA

eXtreme Channel	@ 200 Mhz (dB)
PS NEXT	35.4
Pair-to-Pair NEXT	37.3
Attenuation	27.8
PS ACR	7.6
Pair-to-Pair ACR	9.5
Return Loss	10.5
ELFEXT	22.9
PS ELFEXT	19.5

EXTREME™ CABLING SYSTEM COMPONENTS

QuickPort® eXtreme Connectors	Part Number
8-conductor, non-keyed	61108-R*6
eXtreme Patch Cords	
xx: 03, 05, 07, 10, 15 foot - white cord	62454-xxW
eXtreme Field Configurable Patch Panels	
24-port High Density (1.75" x 19")	49255-H24
48-port High Density (3.5" x 19")	49255-H48
24-port with cable tray (3.5" x 19")	49255-Q24
32-port with cable tray (3.5" x 19")	49255-Q32
eXtreme Field Configurable Patch Blocks	
12-port (empty)	49255-Q89
Mounting Bracket (sold separately)	40089-D

You decide how fast you need to move.



COMPONENT PERFORMANCE

Regardless of which Leviton system you choose to install, you can be assured you're getting one of the best values in the industry. Leviton offers fully tested components for guaranteed channel performance of our three systems. Modular QuickPort snap-in connectors form the basis of each with robust design features and reliable performance. System tested patch panels and patch blocks ensure cross-connects meet your high-speed data needs. Patch cords, the ever-critical link between components, round out each of our channel-compliant systems. Cabling is available from a wide variety of cable manufacturers for matchless connectivity between components. For a list of Leviton cable partners call 1-800-922-6229.

LIFETIME WARRANTY

Each of our systems is backed by a Lifetime Warranty on parts and performance when installed as part of a Leviton Certified Cabling system. For more information on our Lifetime Warranty call Sales Support at 1-800-922-6229.

CHANNEL PERFORMANCE

Channel performance specifications are the only way to guarantee a system's true end-to-end performance in a given application. So when a company claims their *components* perform up to the proposed standard, you're only getting half the story.

Because Leviton Telcom wasn't satisfied with just meeting the channel specs, we chose to develop systems that surpass Category 5 and the proposed standards for Category 5e and Category 6 channels.

When you're looking for true channel performance, you'll want Leviton Telcom's Power Sum, GigaMax™ or eXtreme™ Cabling Systems.



Lifetime
PERFORMANCE WARRANTY
ON CERTIFIED SYSTEMS

Note: Because Leviton engages in a continuous program of product improvement, data in this catalog is subject to change without notice.

Leviton Telcom • 2222 - 222nd Street SE, Bothell, WA 98021-4422
1-800-922-6229 • Tel: 425-486-2222 • E-mail: info@levitontelcom.com
International E-mail: levtelintl@levitontelcom.com

© 1999 Leviton Manufacturing Co., Inc. [157]

 **LEVITON**
TEL COM