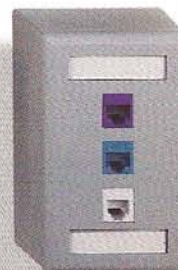




## GET MORE BANDWIDTH FOR YOUR BUCK

The Leviton Telcom Category 5 Enhanced Performance System, including Power Sum patch panels and patch cords, is the answer to the telecommunications industry's growing need for speed and bandwidth capacity. The Leviton Enhanced System is designed to perform well beyond current industry standards to support future extended applications such as 1000Base-T and 622 Mbps ATM. As if that weren't enough, Leviton Telcom also guarantees all parts and performance well into the next century with the industry's only Lifetime Performance warranty on any Enhanced system installed by a certified Leviton Telcom installer.



**NEW** Enhanced Performance **NEW** RCA & S-video **NEW** Backboxes & Wallplates **NEW** Cable Management

# EVERY LASTING STRUCTURE STANDS

*Build upon Leviton Telcom's high performance*

At last count, there were nearly 150 telecommunications connectivity companies offering many thousands of components. It is only inevitable that working with the same raw materials and under the same set of standards, the best of the best of those manufacturers would produce equally superior products. With connectivity component performance pushing the limits of technology, what real differences could possibly remain between brands as far as the specifier and end-user are concerned?

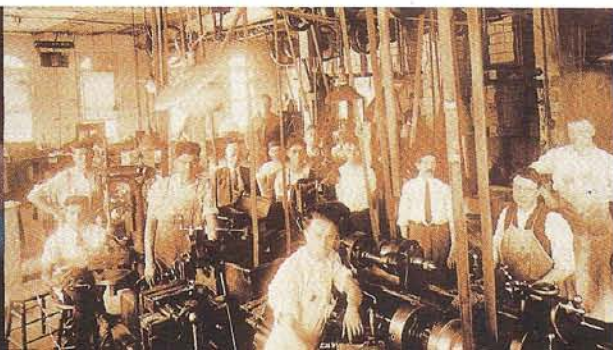
That question was partly responsible for the creation of Leviton Telcom a decade ago, by one of the most respected

names in the electrical industry: Leviton. This was and is a company built upon a very strong foundation, one where quality and lasting performance are the cornerstones of its existence. Leviton Telcom has the advantage of sharing this visionary leadership.

Leviton Telcom has made its mark by standing out from the rest of the high-end component pack as the company which pays equal attention to product innovation, system design and installation. More important, Leviton has established itself as the type of company that recognizes the need for *true customer service*. As a member of the TIA, ATM Forum, BICSI and other important organizations, Leviton is actively involved in the issues that are most important to

our customers. Internally, the company is structured to ensure that our customers' needs are met with dedicated customer service representatives, applications engineers and RCDDs to personally respond to customers' questions. In an effort to build upon this information framework and to keep specifiers and installers well-informed on new technology, Leviton has other equally important programs in place.

The first is Leviton's *Certified Cabling System (CCS) program*. CCS not only guarantees that systems installed today can support the needs of the future, but that future equipment and technology upgrades can be easily made without degrading system performance. All aspects of system design, installation,





## CHANGING THE WAY YOU LOOK AT WALLPLATES

Now one wallplate can accommodate even the most dense telecommunications wiring requirements. Leviton Telecom's family of single- and dual-gang wallplates holds up to 12 jacks to manage your every telecommunications need. All wallplates are compatible with Leviton's entire line of QuickPort® snap-in modules, including the new RCA and S-video modules. For surface-mount applications, the wallplates may be used in combination with Leviton's newly designed single- and dual-gang backboxes. Both wallplates and backboxes come in a wide variety of colors and styles to suit any environment.

**SoftCinch**  
Data Cable Protection System by LEVITON



## DON'T TRY MANAGING WITHOUT ONE

Because cabling is the most vulnerable part of any copper or fiber connectivity system, proper cable management is of the utmost importance when it comes to ensuring a system's continual integrity. Leviton Telecom's new SoftCinch® Velcro® Cable Management products are a smart alternative to traditional cable management systems. They don't pinch cables, and they always ensure correct cable bend radius. From the telecommunications closet all the way to the workstation, Velcro cable management products not only simplify adds, moves and changes, but are very space-efficient and cost-effective.

**NEW** Enhanced Performance **NEW** RCA & S-video **NEW** Backboxes & Wallplates **NEW** Cable Management

# RTS WITH A SOLID FOUNDATION.

*products for over-the-top network connectivity.*

testing and maintenance are integrated and controlled under CCS, which results in a fully open-architecture system. Leviton stands firmly behind the quality and reliability of its products, with each CCS installed system backed up by the industry's first and only **Lifetime Warranty** on products and performance. In addition, Leviton's CCS training sessions are approved for six hours of BICSI continuing education credit.

CCS installers work only with Leviton-approved products and cable, and they work with the Leviton support team every step of the way on every system. They're equipped with the industry's best system design tools as well: the **Leviton Telecom SPEC program**—an invaluable resource complete with

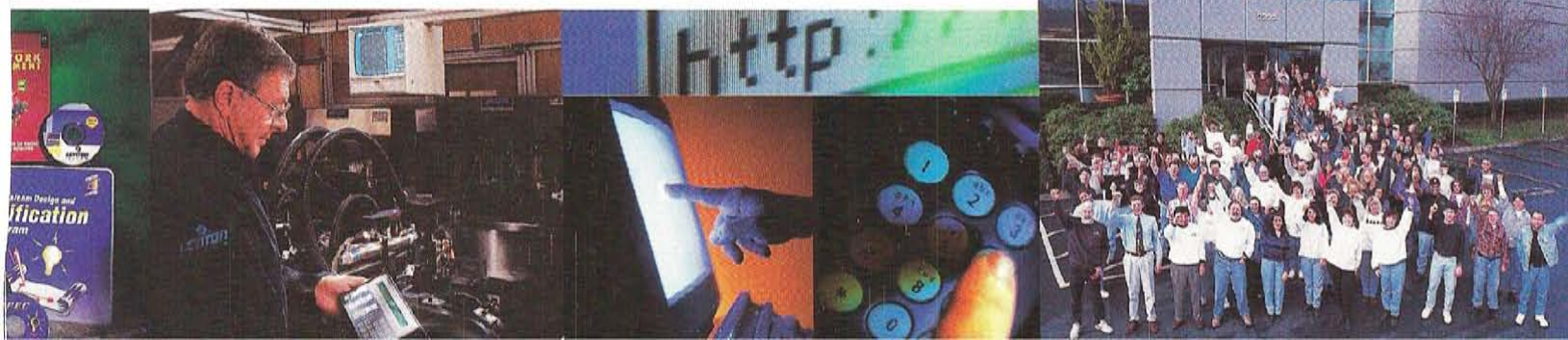
industry guidelines, typical product specifications and CAD-based design tools, including the newly available VISIO software-based catalog of shapes. All in all, the Leviton SPEC program provides a stable foundation for blueprinting the telecommunications systems of the future.

As the need for speed and capacity increases, Leviton Telecom is well-placed in the technology frontier above Category 5 performance with an **Enhanced Performance System (EPS)** compatible with all industry-standard componentry. Beyond a standard Category 5 system, Leviton's **EPS** guarantees enough headroom to not only fully support, but *exceed* 1000Base-T applications. In development at present

is an even more powerful system: the Leviton **eXtreme Cabling System (XCS)** designed for future high-speed applications requiring proposed Category 6 performance.

Leviton Telecom firmly believes that a solid support network and system compatibility and adaptability are the most important building blocks for those planning next-century premise wiring. Make those advantages work for you for your next over-the-top connectivity network.

**Lifetime**  
PERFORMANCE WARRANTY





## CABLING SYSTEM CHOICES IN THE REALM BEYOND CATEGORY 5

*Leviton helps you make informed decisions about future cabling system projects.*

Currently there is a great deal of talk about the new performance levels of products being developed, driven in part by the market's need—whether real or perceived—for higher speeds and wider bandwidth.

As a result, the LAN communications industry is actively developing high-speed (gigabit) applications, cable, hardware, and standards to meet these market needs. However, because this is all being done simultaneously, hardware is being developed without a rock-solid standard as the basis for its design.

The swirl of hype and speculation in the absence of a hard-and-fast specification makes it difficult for cabling system specifiers, installers and users to make an informed decision about when to install Cat 5, Cat 5e (Enhanced Cat 5), or Cat 6 products for current and future cabling projects. Here, Leviton presents the factors to consider when choosing systems for gigabit speeds (1000Base-T) and beyond.

**Cat 5 and Enhanced Cat 5: Both will support 1000Base-T—but Enhanced Cat 5 provides greater insurance against installation variables or marginal systems.**



The IEEE committee is writing the specification for 1000Base-T applications to run on standard Category 5 hardware and cable. However, because the margin for error is small, there are likely to be risks associated with running 1000Base-T on Cat 5. Ambient noise and/or installation variables may cause marginal (barely passing) systems to run with excessive bit errors, thereby increasing re-transmissions and reducing data throughput. To reduce these risks, it may be worth installing a Cat 5e or Cat 6 cabling system.

Another factor to consider: while supporting gigabit speeds over existing installed Cat 5 systems is achievable, it will require expensive hardware. This is due to the sophisticated noise cancellation circuitry which will be needed in network interface cards, hubs and other equipment to achieve 1000Base-T over Cat 5 cable. In contrast, installing a quality Cat 5e system now, may in the future allow users to select their active network equipment from a wider, and potentially less costly, pool of choices.

To support networks planning to run 1000Base-T in the future, Leviton recommends its currently available *Enhanced Performance System (EPS)* of Cat 5e workstation connectors, patch panels, 110 blocks, and patch cords. These products are proven to provide excellent power-sum system performance, are available right now, are forward- and backward-compatible with all Cat 5 and Cat5e products, and are very cost-effective.

A Leviton Cat 5e Enhanced Performance System (EPS) system provides significant, guaranteed headroom over Cat 5 specifications.

This headroom is more than adequate to guarantee proper operation of 1000Base-T designed to run over standard Cat 5 cable.

**Leviton Category 5e Connector System Performance Versus Existing and Developing Standards and Applications**

Channel Performance at 100 MHz	Cat 5	Cat 5e*	Leviton EPS	Cat 6*	1000 Base-T*
NEXT	-27.1	-30.1	-33.6	-39.9	-27.1
Attenuation	-24.0	-24.0	-20.2	-21.7	-24.0
ACR	3.1	6.1	13.4	18.2	3.1
ACR Margin	N/A	Provides 3.1 dB of Margin over Cat 5	Provides 10.3 dB of Margin over Cat 5	Provides 15.1 dB of Margin over Cat 5	Provides 0 dB of Margin over Cat 5

\*Based upon proposed specifications.

**Category 6: For anticipation of applications beyond 1000Base-T.**

Category 6 will provide even greater bandwidth than Cat 5e by taking advantage of recent strides in cable and component manufacture, and by addressing some performance parameters not included in the Category 5 standard.

The proposed Category 6 (also called Class E) is a tighter specification than Cat 5, taking into account additional factors which directly affect cabling system performance. The increased capability of Cat 6/Class E will come from products which can meet the more stringent requirements for ACR, NEXT, FEXT, attenuation, return loss, and other parameters.

However, there are two issues to be aware of. Since these proposed specs are still in draft form and subject to change, until the modular plug is specified, there is a very high probability that Cat 6/Class E hardware from one manufacturer will not work with the hardware from another. As a result, it may be advisable to buy all components of a Cat 6/Class E system from one company until a standard is in place to ensure inter-operability between manufacturers.

Also, as the specification continues to change, there is the chance that Cat 6/Class E products developed today may not be compatible with those developed to meet the future draft specifications. Therefore, those who want to be absolutely sure of Category compliance may wish to wait until the standard is published.

But not every installation can wait, so for those who want Cat 6/Class E performance today, Leviton is developing a Cat 6/Class E connector system which will exceed the current draft specifications for Cat 6/Class E hardware. This connector system will be available in the second quarter of 1998, and can be used for 1000Base-T—and whatever applications come after 1000Base-T—that are designed to run on Cat 6/Class E cabling systems.

**LEVITON**  
TELECOM



## WANT TO KNOW MORE?

We thought you would.



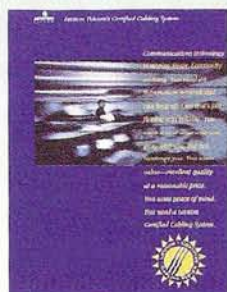
### FRAME TO STATION CATALOG (T300)

A definitive guide to communications wiring solutions—the Leviton Telcom catalog of structured cabling products.



### HOME AND OFFICE CATALOG (H&O 1.0)

Leviton Telcom is right at home with a line of products dedicated to the needs of residential and smaller commercial users—from telecommunications to home theater.



### CERTIFIED CABLING SYSTEM (CCS) BROCHURE & PROGRAM PAK

Learn more about Leviton's program of certified installers and products which qualify for Lifetime Product and Performance warranties.

### ENHANCED PERFORMANCE SYSTEM BROCHURE (EPS)

See why Leviton Telcom's Enhanced Category 5 System is greater than the Power Sum of all its parts.



### LINE CARD (LC)

A descriptive, up-to-date ordering list of the most popular Leviton Telcom products.



### THE LEVITON WIRING DEVICE CATALOG (D400)

The largest selection of electrical products for residential, commercial and industrial applications from the most trustworthy name in the electrical industry: Leviton.



free **FAST FAX** free **FAST FAX** free **FAST FAX** free **FAST FAX** free

This form must be filled out completely in order to receive the above literature. Thank you.

Name \_\_\_\_\_ Title \_\_\_\_\_

Company \_\_\_\_\_

Address \_\_\_\_\_

City \_\_\_\_\_ State \_\_\_\_\_ Zip \_\_\_\_\_

Country \_\_\_\_\_ Phone \_\_\_\_\_ Fax \_\_\_\_\_

Circle the literature you wish to receive: **T300** **H&O 1.0** **CCS** **EPS** **LC** **D400**

☐ I would also like to receive information on Leviton Telcom's new products.

**WHEN COMPLETE, FAX THIS FORM TO 1.425.485.0112**

Leviton Telcom • 2222-222nd Street SE • Bothell, WA 98021-4422 USA • Phone 1.800.922.6229

International Phone 425.486.2222 • International Fax 425.485.9170

**LEVITON**  
TEL COM  
BICSI 4/98

FAST FAX free FAST FAX free FAST FAX free

FAST FAX free FAST FAX free FAST FAX free

free FAST FAX free FAST FAX free FAST FAX free FAST FAX free